

TECH-4a Page | 1 of 1

Category Technical
 Course Codes & Desc.
 Version 1.0
 Client Generic
 Software 2.12.100

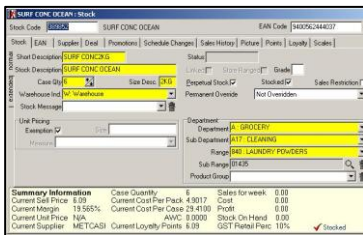
Configure Perpetual 'Live' Inventory

For each department that you want to manage live inventory, you first need to set all the products to perpetual stock.

Procedure to Configure Perpetual Inventory

Hints and Tips

- ✓ Once you've set a department to perpetual stock, every product already registered to that department:
 - has the **Perpetual Stock** check box selected on the Stock screen
 - Stock movements adjust the Stock on Hand (SOH) value.



- ✓ If you create a new stock record, you must still manually select the **Perpetual** check box for the product.

1.	From the HOS/BOS Tools menu, select Codes and Descriptions .							
2.	Click the Department tab.							
3.	Click the required department. <i>*The selected row is highlighted blue.*</i>							
4.	Select the Perpetual Stock check box.	<input type="checkbox"/> Print Labels <input checked="" type="checkbox"/> Perpetual Stock <input type="checkbox"/> Round Prices						
5.	Click Save .	<input type="button" value="Save"/>						
6.	<table border="0" style="width: 100%;"> <tr> <td style="width: 50%;">To:</td> <td style="width: 50%;">then:</td> </tr> <tr> <td>set another department</td> <td>return to step 3.</td> </tr> <tr> <td>finish</td> <td>click Close.</td> </tr> </table>	To:	then:	set another department	return to step 3.	finish	click Close .	<input type="button" value="Close"/>
To:	then:							
set another department	return to step 3.							
finish	click Close .							
		<input type="checkbox"/>						